
PARTS CATALOG



Gasoline Engine Pump

Model

PTG305T
PTG405

No. 2

 **FUJI HEAVY INDUSTRIES LTD.**

ISSUE EMD-PP0871

HOW TO USE THIS PARTS CATALOG

1. Reference numbers with an asterisk


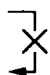

Reference numbers marked with an asterisk indicate that the particular part is available only as a complete set or assembly.

Example :

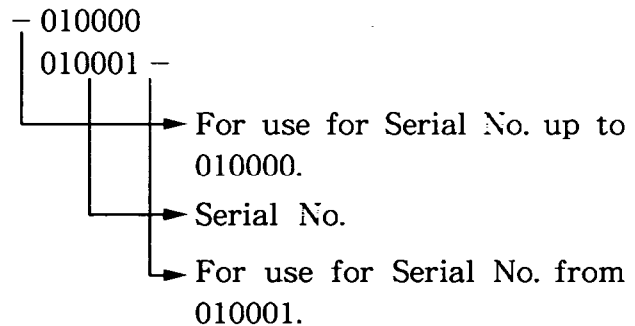
If the reference number is marked with an asterisk and the description of the part states that certain items are included, this means that those included items cannot be ordered separately and must be purchased as a complete assembly.

2. Description of Interchangeability and execution columns



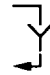
Example : Interchangeability column

-  Items interchangeable between the new and old parts.
-  Items not interchangeable between the new and old parts.
-  Items conditionally interchangeable between the new and old parts which are subject to the description in the execution column.

Example : Execution column



Example : Interchangeable

Part Number	Interchangeability Symbol	Execution	Explanation
Part B Part A		020000 -	This indicates that Part A changed to Part B for pumps with serial numbers from 20000, and that they are interchangeable.
Part C Part B Part A		020000 - 015000 -	This indicates that Part A changed to Part B for pumps with serial numbers from 15000, and that they are not interchangeable. Also, Part B changed to Part C for pumps with serial numbers from 20000 and that they are interchangeable.
Part A		020000 -	This indicates that Part A is a new part for pumps with serial numbers with from 20000.
Part B		- 030000	This indicates that Part B is no longer used for pumps with serial numbers from 30001.
Part B Part A		020000 -	This indicates that Part A changed to Part B for pumps with serial numbers from 20000, and that they are conditionally interchangeable. (See NOTE described at the end of the section.)

3. The contents of this parts catalog are subject to revision without notice.

To INSURE PROMPT AND ACCURATE SERVICE, ALSO THE FOLLOWING INFORMATION MUST BE GIVEN.

1. State exactly the quantity of each part and its part numbers.
2. Clearly state whether parts are to be shipped by express, freight or parcel post.
3. State the exact mailing address.

CONTENTS

	Page
FIG. 1 PUMP (PTG305T)	1
FIG. 1 PUMP (PTG405)	5
FIG. 2 CRANKCASE	7
FIG. 3 CRANKSHAFT and PISTON	9
FIG. 4 INTAKE and EXHAUST	11
FIG. 5 GOVERNOR, OPERATE	13
FIG. 6 COOLING and STARTING (UP TO JUL. '90)	15
FIG. 6 COOLING and STARTING (AFTER AUG. '90)	17
FIG. 7 FUEL, LUBRICANT	19
FIG. 8 ELECTRIC DEVICE	21
FIG. 9 OIL SENSOR	23
FIG. 10 ACCESSORIES	25

FIG. 1 PUMP(PTG305T)

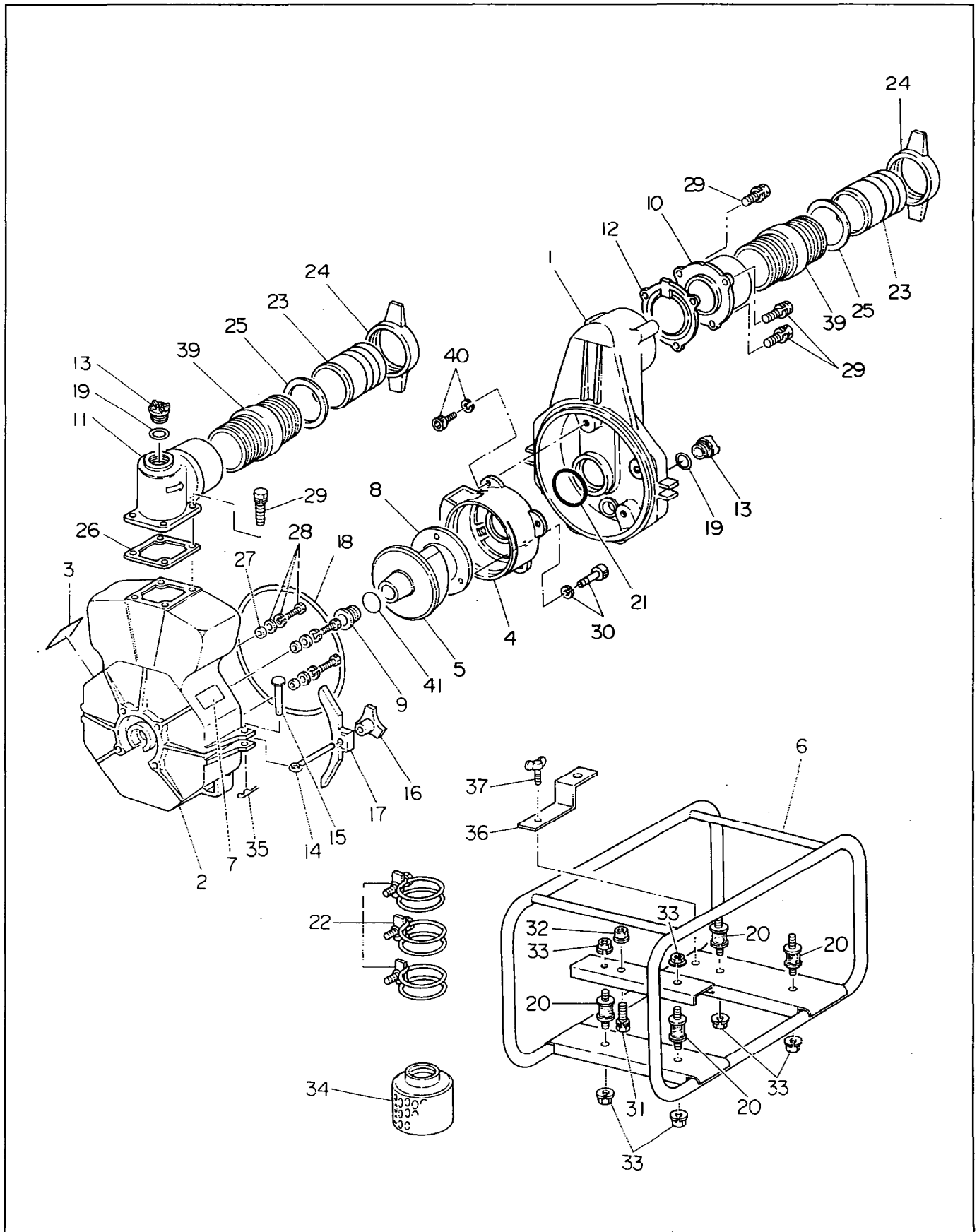


FIG. 1 PUMP(PTG305T)

└ Interchangeability

Ref. No.	Parts Number	Description	Q'ty		Execution
1	481 - 00000 - 68	CASING	1	FK	# 1037598~
1	480 - 08210 - 01	CASING	1		
2	480 - 08210 - 02	CASING COVER	1		
3	480 - 05210 - 37	CAUTION PLATE	1		
4	481 - 00000 - 69	INNER CASING	1	FK	# 1037598~
4	480 - 08210 - 03	INNER CASING	1		
5	480 - 08210 - 04	IMPELLER	1		
6	481 - 00001 - 42	FRAME	1		
7	482 - 00014 - 03	LABEL, pump name	1		
8	481 - 00000 - 70	LINER	1	FK	# 1037598~
8	480 - 08210 - 07	LINER	1		
9	480 - 08210 - 08	MECHANICAL SEAL	1		
10	481 - 00000 - 71	SUCTION FLANGE (NPT)	1	FK	# 1037598~
10	480 - 08210 - 09	SUCTION FLANGE (PF)	1		
11	481 - 00000 - 72	DELIVERY FLANGE (NPT)	1	FK	# 1037598~
11	480 - 08210 - 10	DELIVERY FLANGE (PF)	1		
12	481 - 00000 - 73	CHECK VALVE	1	O	
12	480 - 08210 - 11	CHECK VALVE	1		
13	480 - 08210 - 12	PLUG	2		
14	480 - 08210 - 13	COVER BOLT	2		
15	480 - 08210 - 14	RIVET	2		
16	480 - 08210 - 15	KNOB	2		
17	480 - 08210 - 16	CASING COVER HOLDER	2		
18	480 - 08210 - 17	PACKING, casing	1		
19	480 - 08210 - 18	"O" RING	2		
20	480 - 08210 - 19	CUSHION RUBBER	4		
21	480 - 08210 - 20	"O" RING, inner casing	1	FK	# 1037598~
21	481 - 00000 - 87	PACKING, inner casing	1		
22	480 - 08010 - 28	HOSE BAND	3		
23	480 - 08010 - 18	NIPPLE	2	FK	
23	480 - 08210 - 22	NIPPLE	2		
24	480 - 08010 - 16	COUPLING	2	FK	
24	480 - 08210 - 23	COUPLING	2		
25	480 - 08010 - 17	PACKING, nipple	2		
26	480 - 08010 - 20	PACKING, delivery flange	1		
27	480 - 05010 - 06	SEAL PACKING	4		
28	480 - 05010 - 05	BOLT and WASHER ASS'Y (M8 × 48)	4	O	
28	480 - 05210 - 27	BOLT and WASHER ASS'Y (M8 × 48)	4		
29	480 - 05010 - 03	BOLT and WASHER ASS'Y (M10 × 30)	7		
30	480 - 08210 - 29	SOCKET BOLT (M6 × 20)	3	O	
30	480 - 08210 - 29	SOCKET BOLT (M6 × 20)	2		
31	480 - 08210 - 30	BOLT and WASHER ASS'Y (M10 × 45)	2		
32	480 - 10010 - 25	FLANGE NUT (M10)	2		
33	480 - 10010 - 24	NUT and WASHER ASS'Y (M8)	6		

FIG. 1 PUMP(PTG305T)

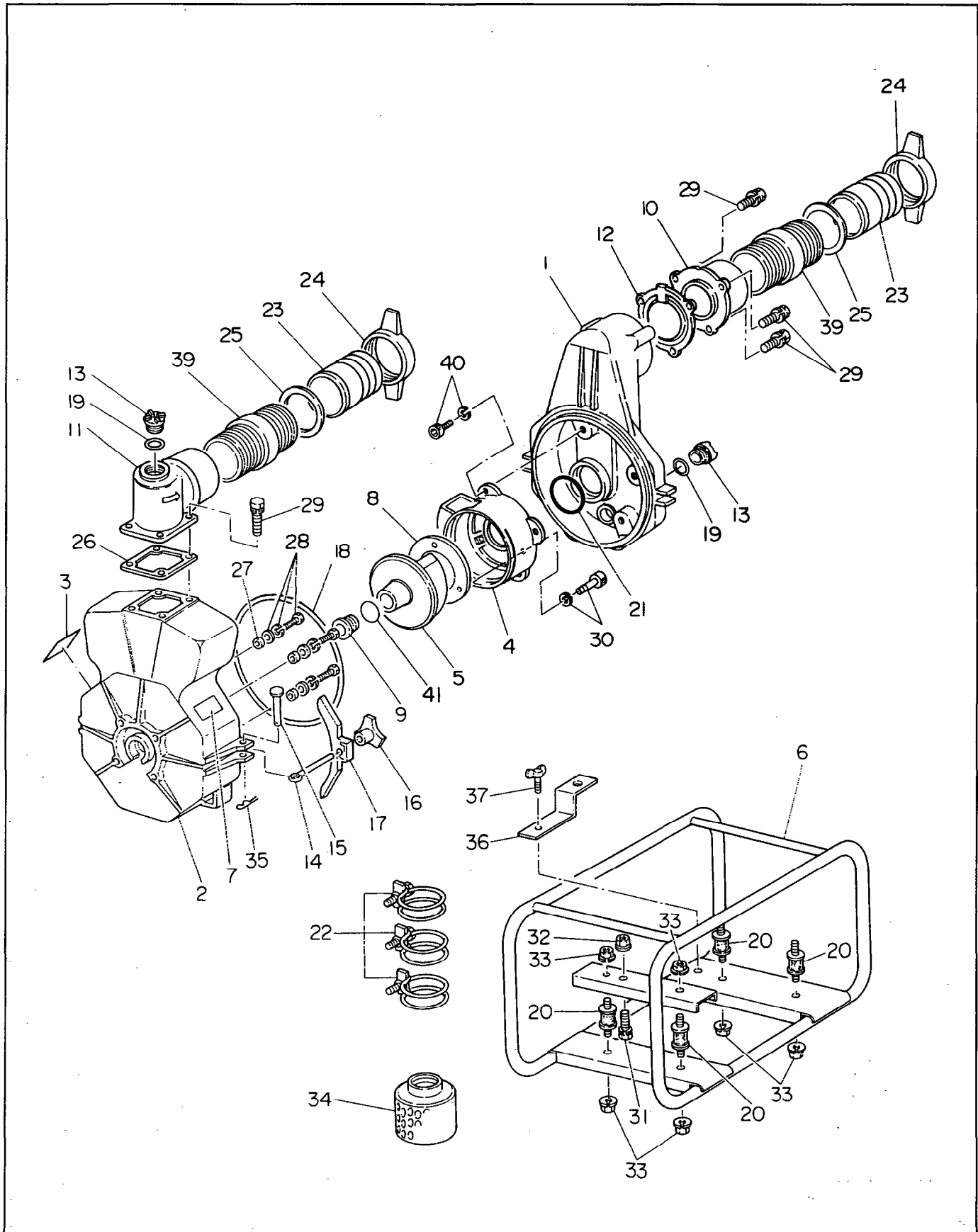


FIG. 1 PUMP(PTG405)

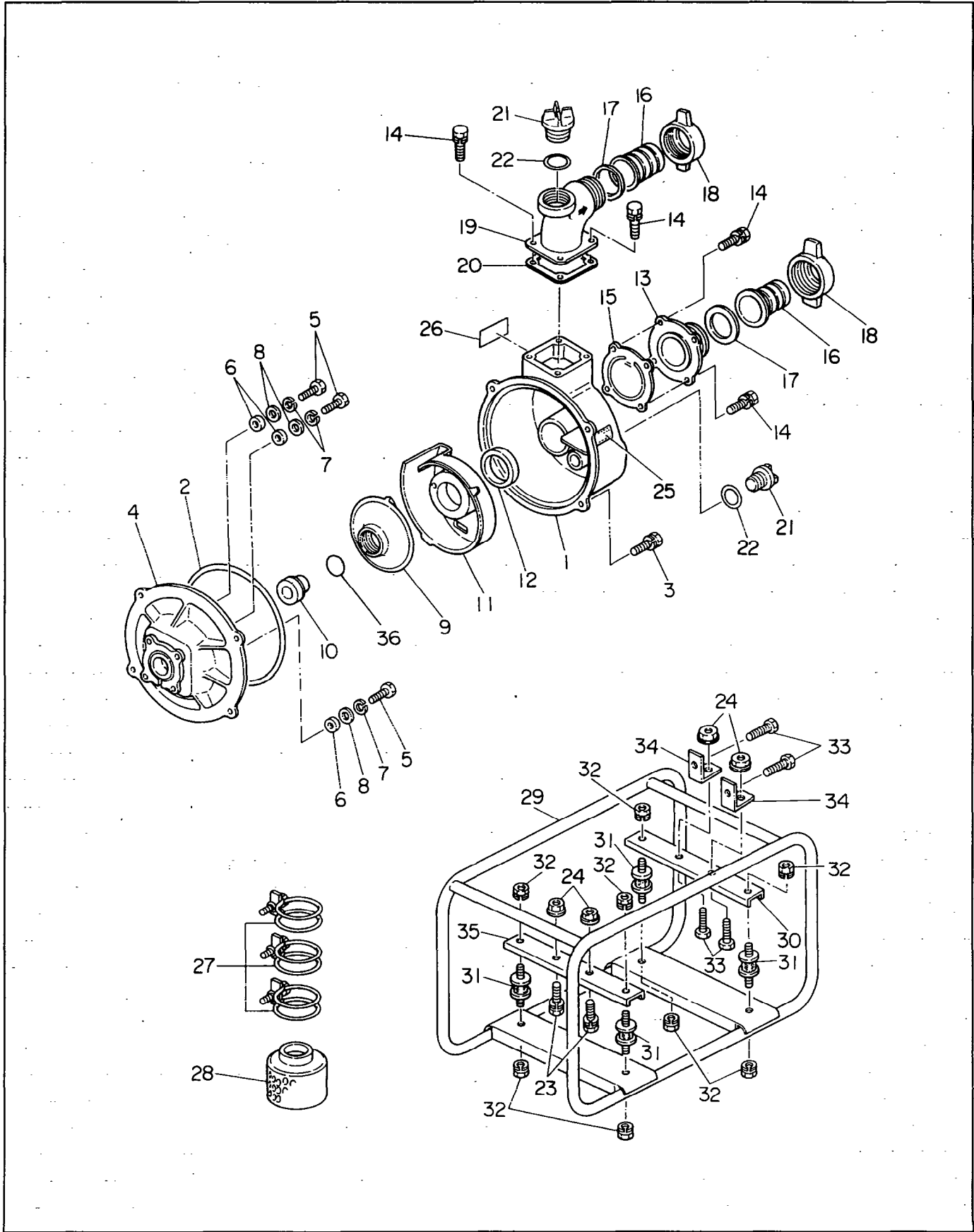


FIG. 2 CRANKCASE

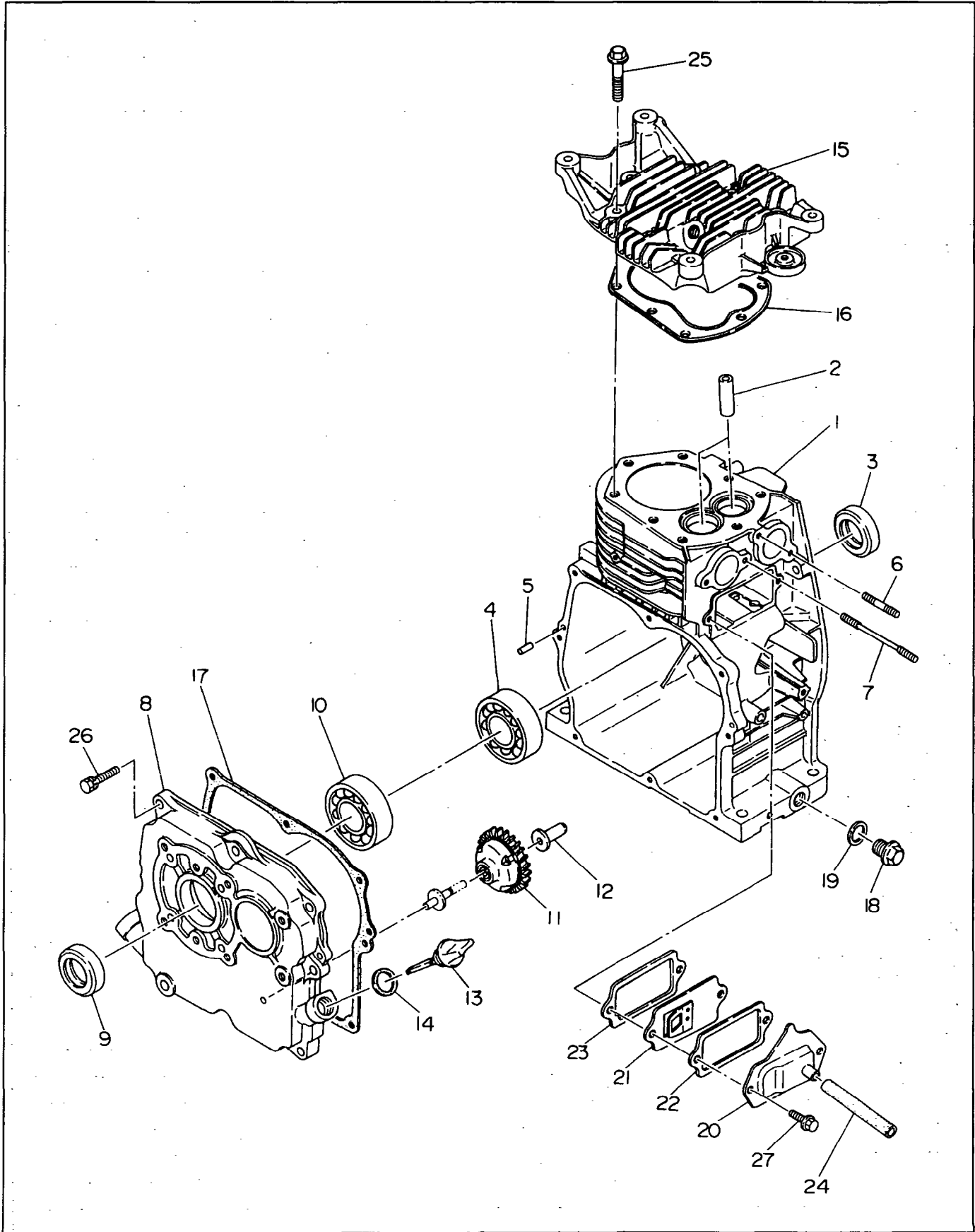


FIG. 3 CRANKSHAFT and PISTON

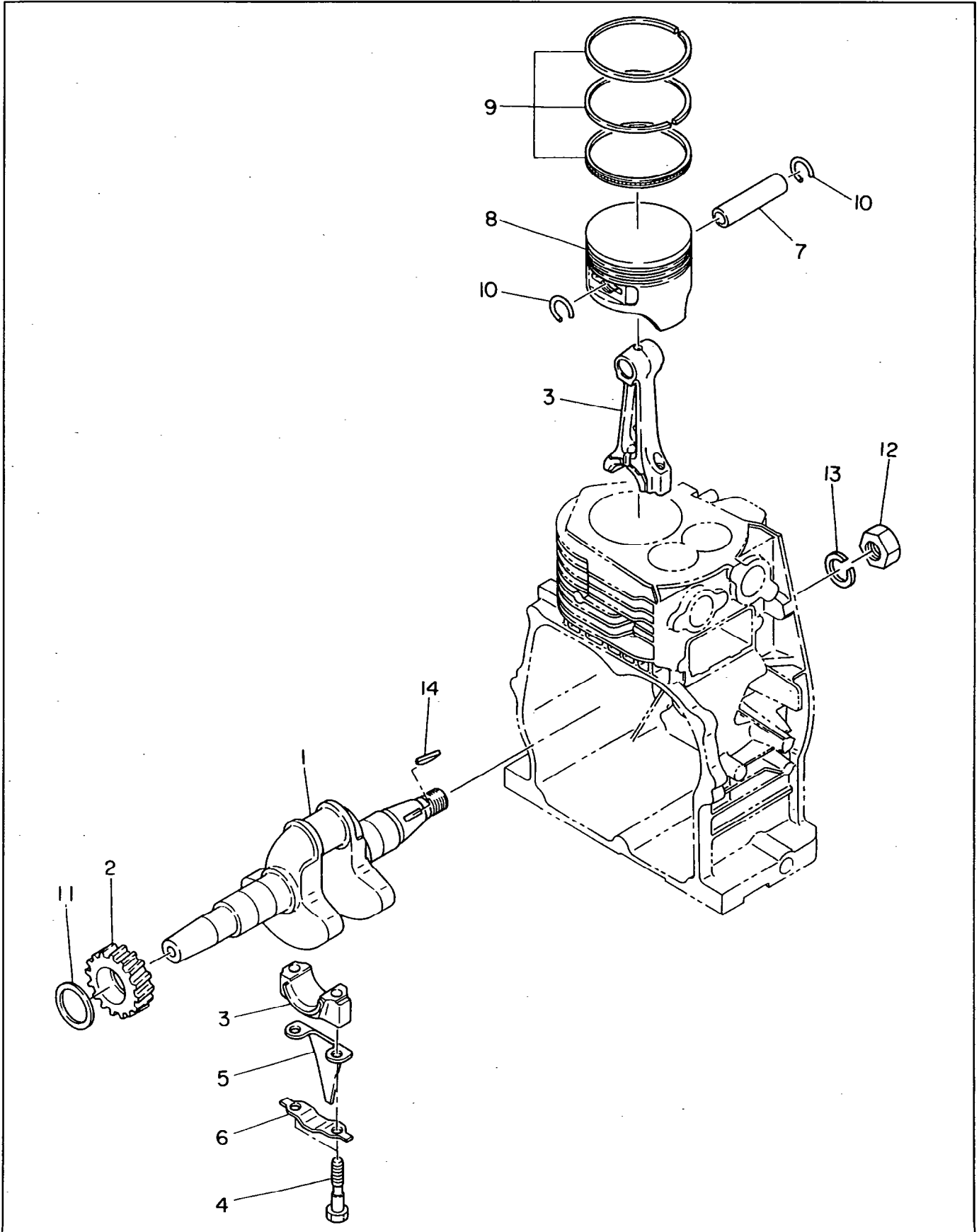


FIG. 4 INTAKE and EXHAUST

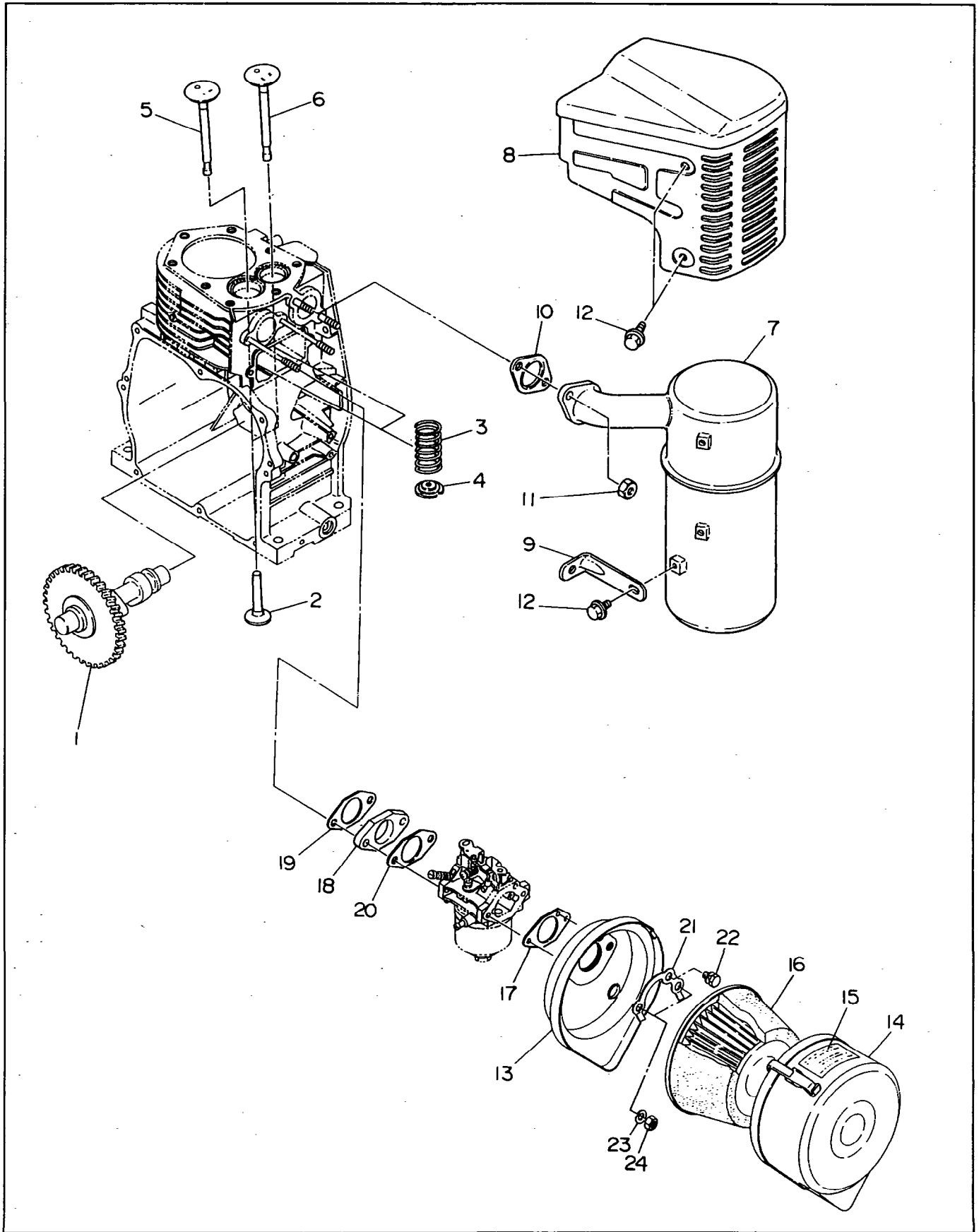


FIG. 5 GOVERNOR, OPERATE

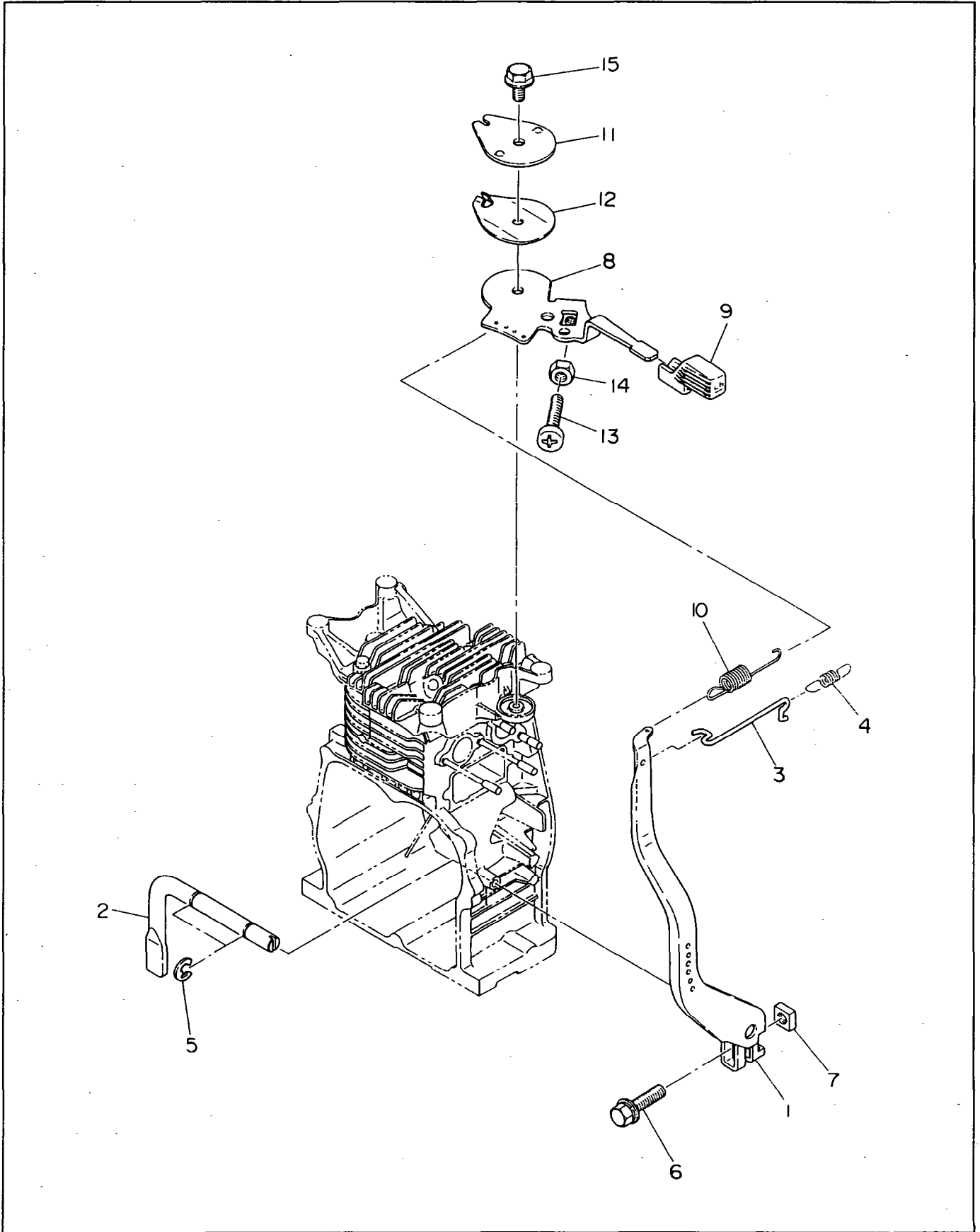


FIG. 6 COOLING and STARTING(UP TO JUL. '90)

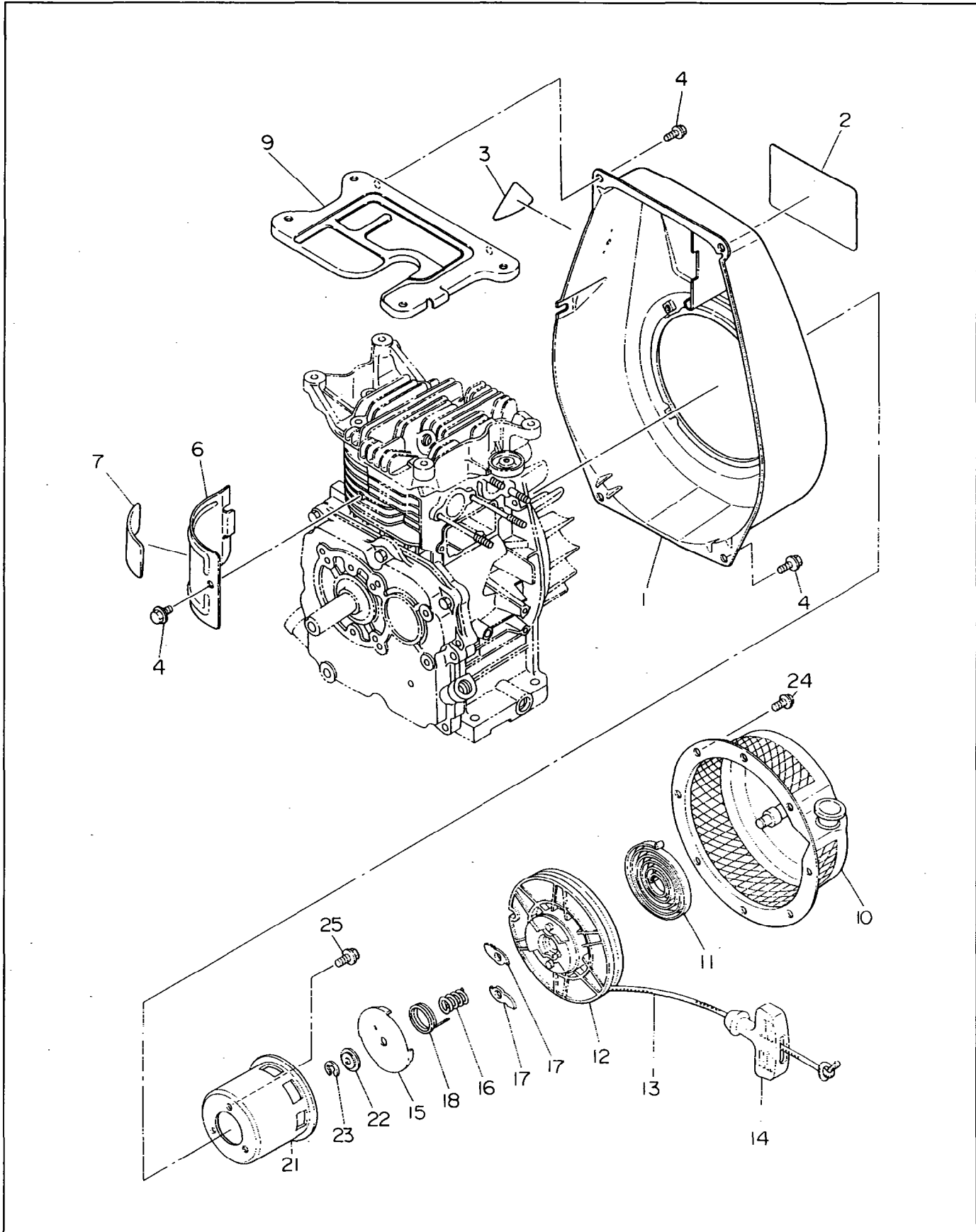


FIG. 6 COOLING and STARTING(AFTER AUG. '90)

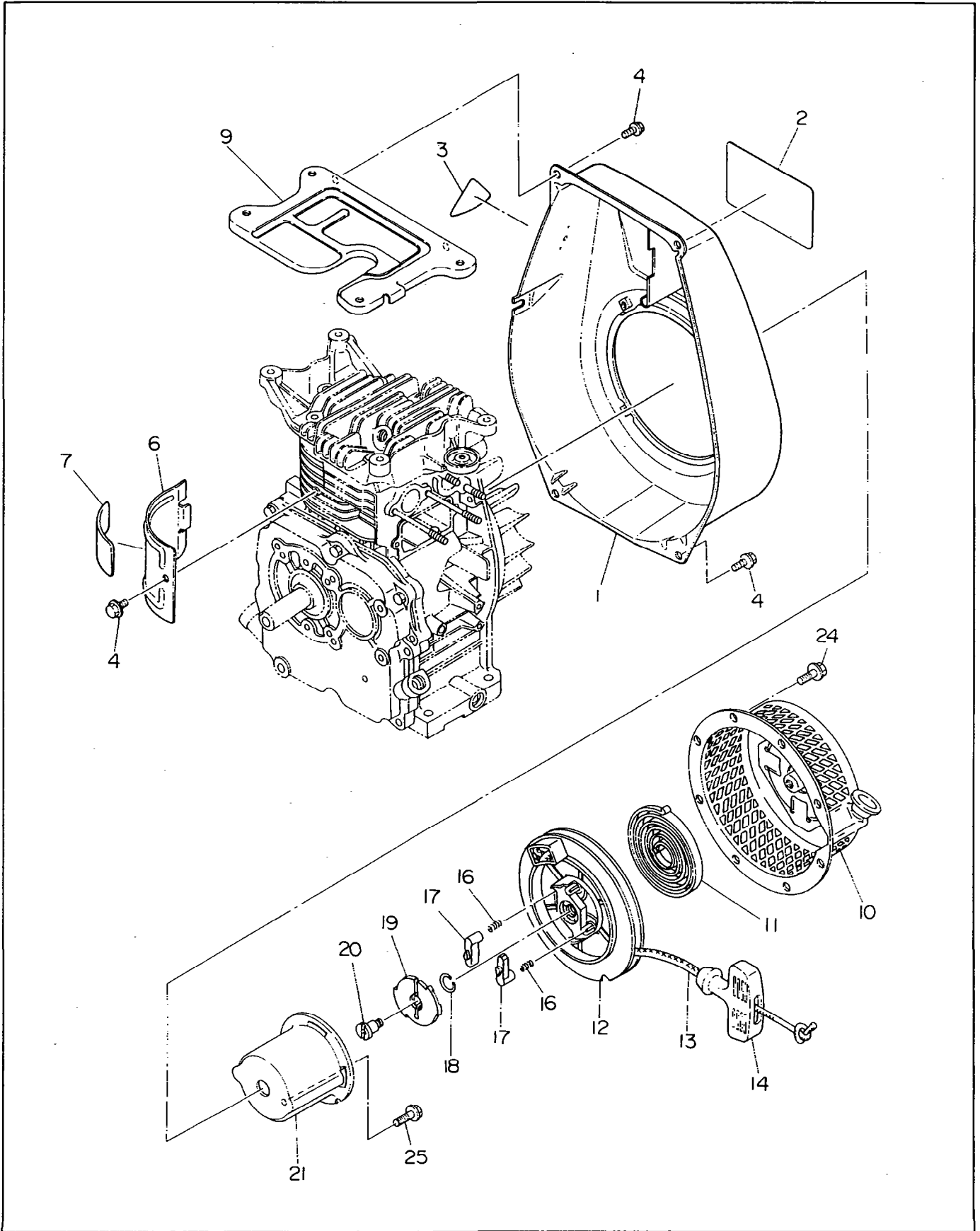


FIG. 7 FUEL, LUBRICANT

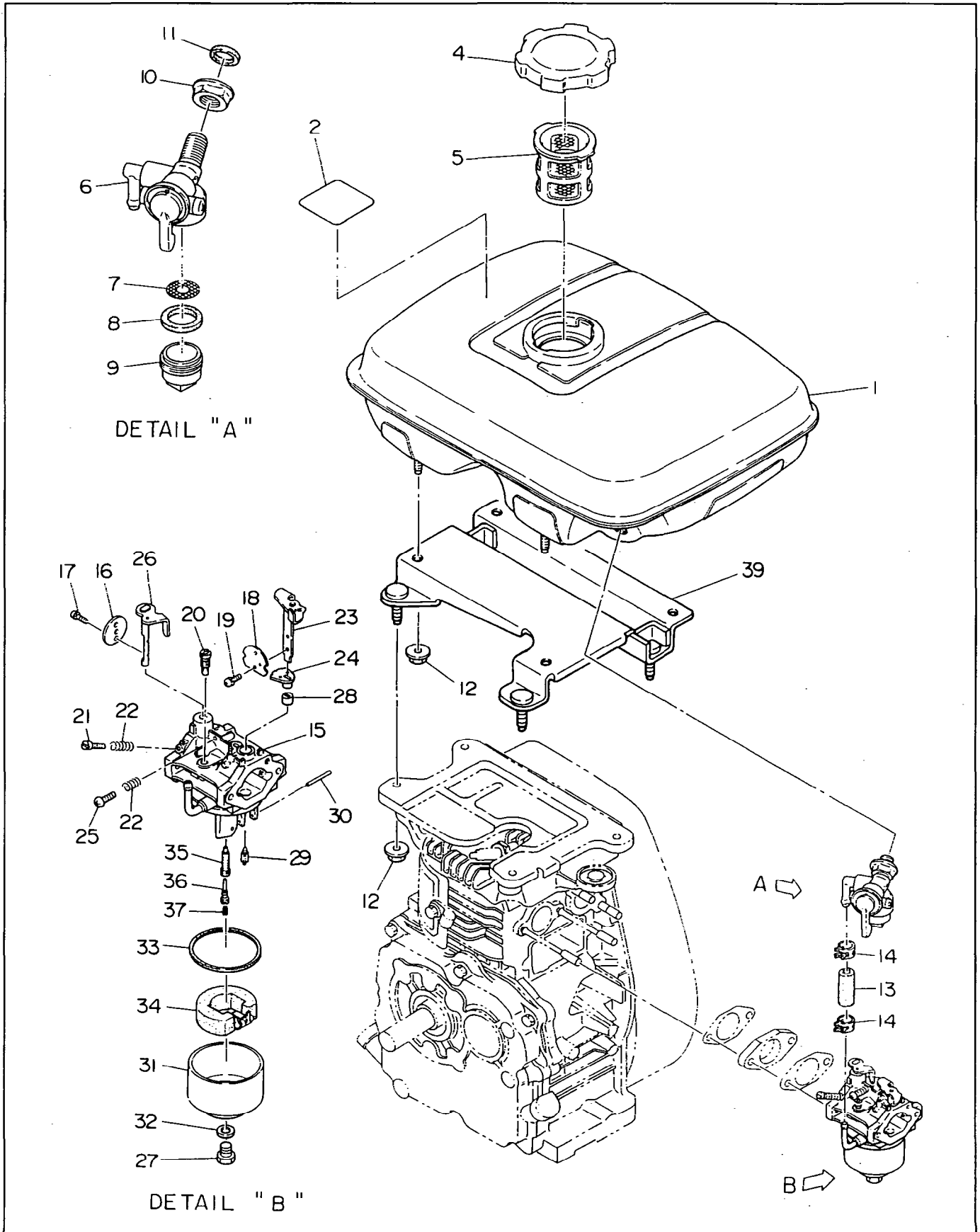


FIG. 7 FUEL, LUBRICANT

Interchangeability

Ref. No.	Parts Number	Description	Q'ty	Execution
* 1	234 - 61152 - 01	FUEL TANK, compl. Include item 2	1	
2	073 - 20015 - 70	LABEL, oil caution	1	
4	043 - 04300 - 15	FUEL TANK CAP, compl.	1	
5	064 - 13600 - 10	FUEL FILTER	1	
* 6	064 - 20064 - 00	FUEL STRAINER ASS'Y Includes items 7 thru 11	1	
7	064 - 20064 - 20	SCREEN	1	
8	064 - 20064 - 10	RUBBER PACKING	1	
9	064 - 20042 - 10	CUP	1	
10	064 - 20064 - 30	NUT	1	
11	064 - 20064 - 40	RUBBER PACKING	1	
12	002 - 38080 - 00	FLANGE NUT	8	
*13	234 - 62615 - 01	FUEL PIPE, compl. Includes items 13 and 14	1	
13	085 - 10600 - 00	RUBBER PIPE (6 φ × 12 φ × 105mm)	1	
14	056 - 11100 - 20	HOSE CLAMP	2	
*15	234 - 62307 - 10	CARBURETOR ASS'Y Includes items 16 thru 37	1	
*15	234 - 62307 - 00	CARBURETOR ASS'Y Includes items 16 thru 37	1	
16	213 - 62537 - 08	THROTTLE VALVE	1	
17	209 - 62351 - 08	SCREW	2	
17	150 - 62356 - 08	SCREW	2	
18	234 - 62525 - 08	CHOKE VALVE	1	
19	237 - 62451 - 08	SCREW	2	
19	234 - 62450 - 08	SCREW	2	
20	128 - 62420 - 08	PILOT JET	1	
21	209 - 62305 - 08	PILOT SCREW	1	
22	206 - 62446 - 08	SPRING, pilot	2	
23	234 - 62520 - 08	LEVER, choke	1	
24	234 - 62550 - 08	RING	1	
25	224 - 62452 - 08	SCREW	1	
26	234 - 62541 - 08	SHAFT ASS'Y, throttle	1	
26	234 - 62530 - 08	SHAFT ASS'Y, throttle	1	
27	129 - 62351 - 08	BOLT	1	
28	226 - 62550 - 08	RING	1	
29	224 - 62312 - 08	NEEDLE VALVE ASS'Y	1	
29	224 - 62309 - 08	NEEDLE VALVE ASS'Y	1	
30	214 - 62515 - 08	PIN, float	1	
31	224 - 62552 - 08	FLOAT CHAMBER BODY	1	
32	207 - 62345 - 08	INSERT WASHER	1	
33	206 - 62540 - 08	CHAMBER PACKING	1	
34	234 - 62506 - 08	FLOAT	1	
34	234 - 62505 - 08	FLOAT	1	
35	234 - 62440 - 08	NOZZLE	1	
36	234 - 62425 - 08	PIPE ASS'Y	1	
37	234 - 62401 - 08	MAIN JET	1	
39	234 - 61601 - 01	TANK BRACKET, compl.	1	

FIG. 8 ELECTRIC DEVICE

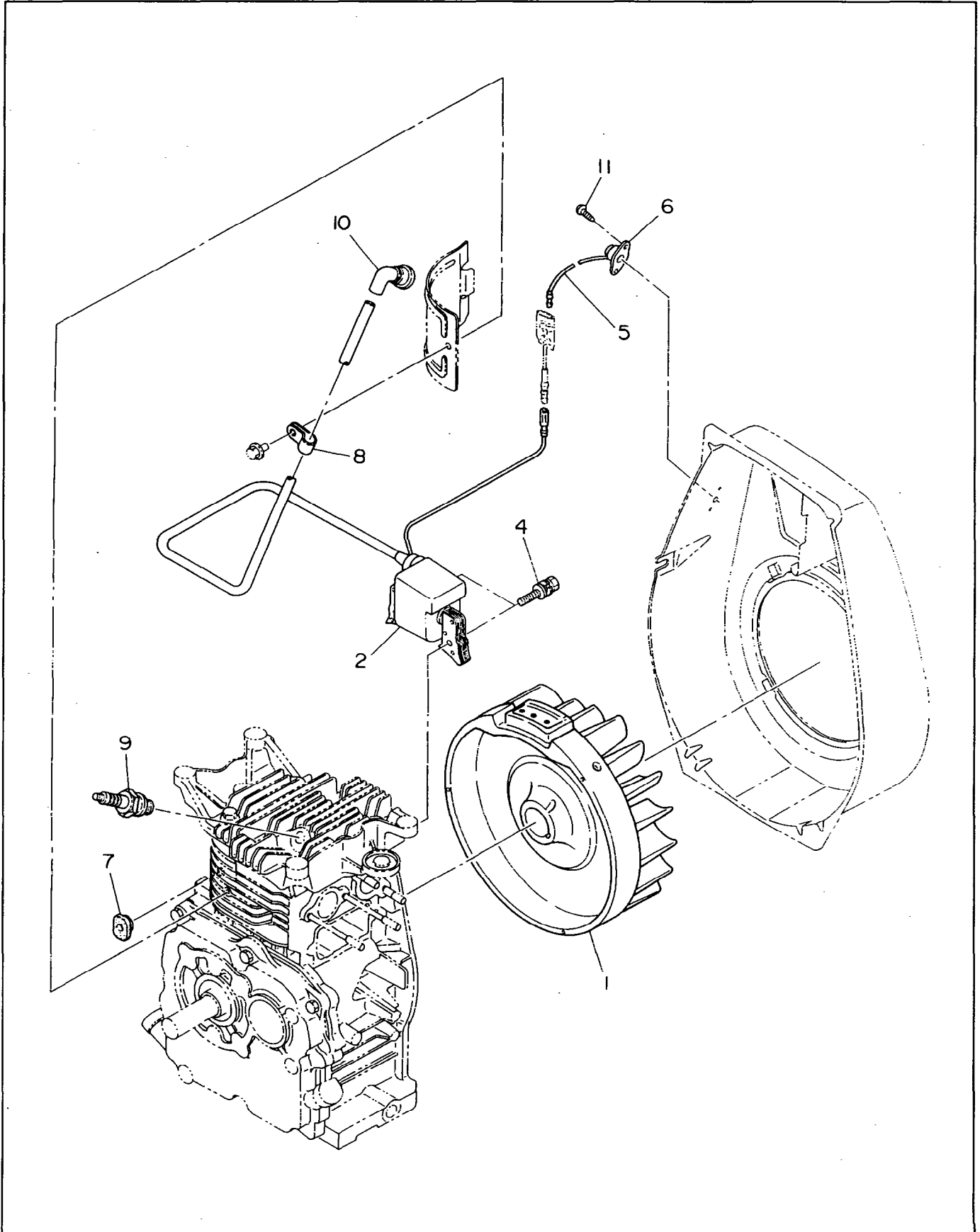


FIG. 9 OIL SENSOR

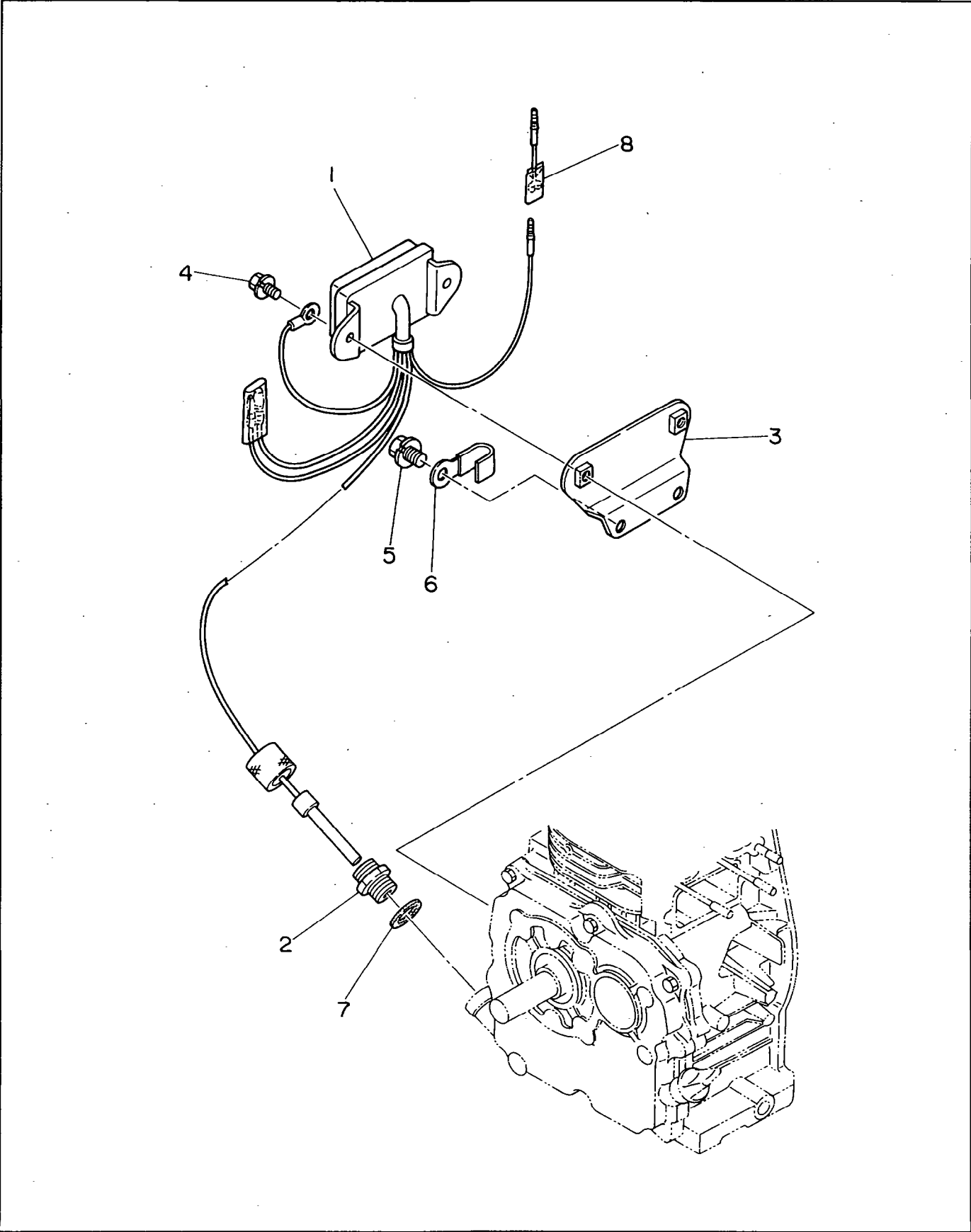
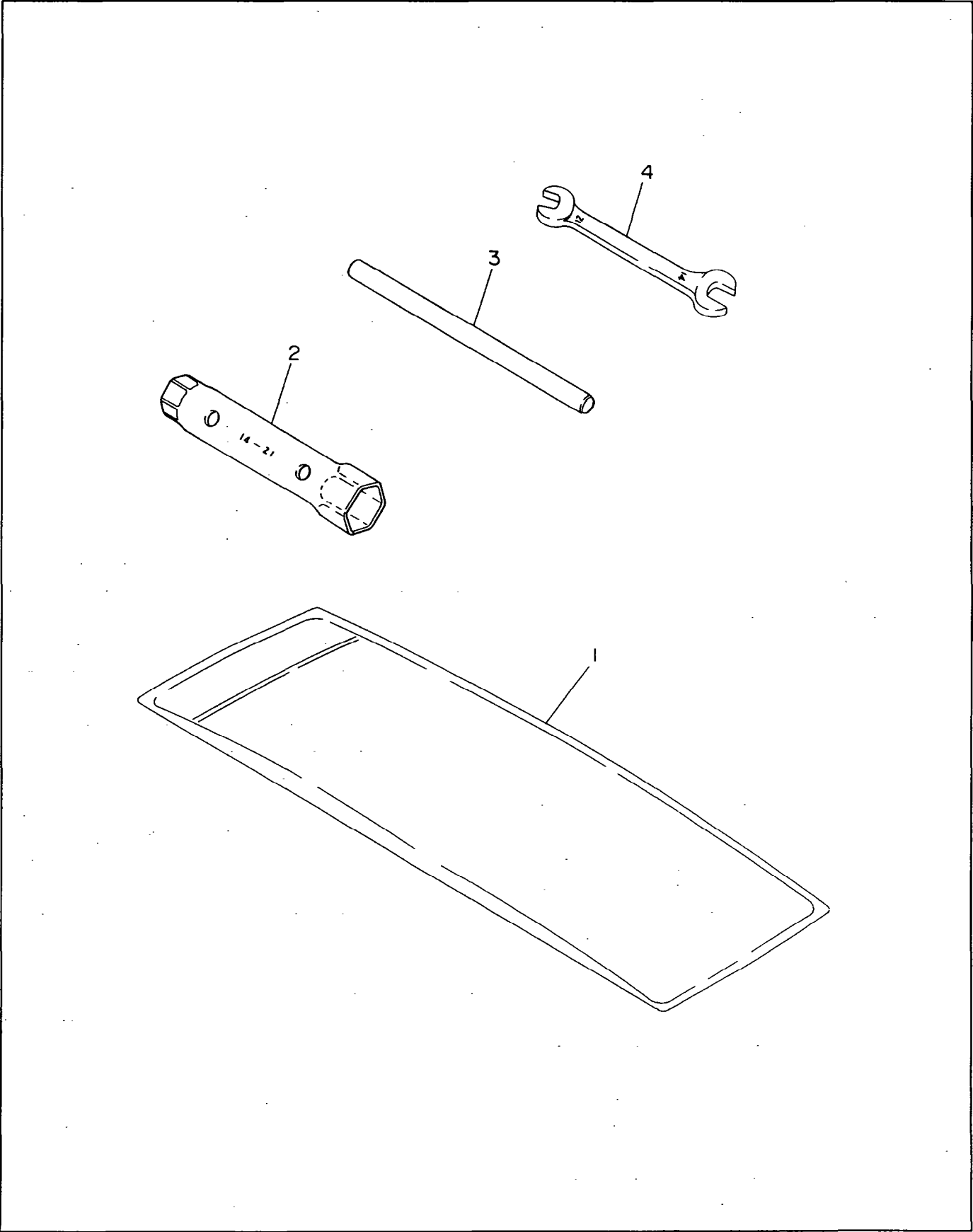


FIG. 10 ACCESSORIES







FUJI HEAVY INDUSTRIES LTD.

INDUSTRIAL PRODUCTS DIV.

Subaru Bldg.

1-7-2, Nishi-Shinjuku, Shinjuku-ku, Tokyo 160, Japan
TEL: (Tokyo 03) 3347-2414, 5 TELEX: 232-2401 FUJI J

CABLE ADDRESS: FUJIHEAVY TOKYO

FACSIMILE: (TOKYO 03) 3347-2418